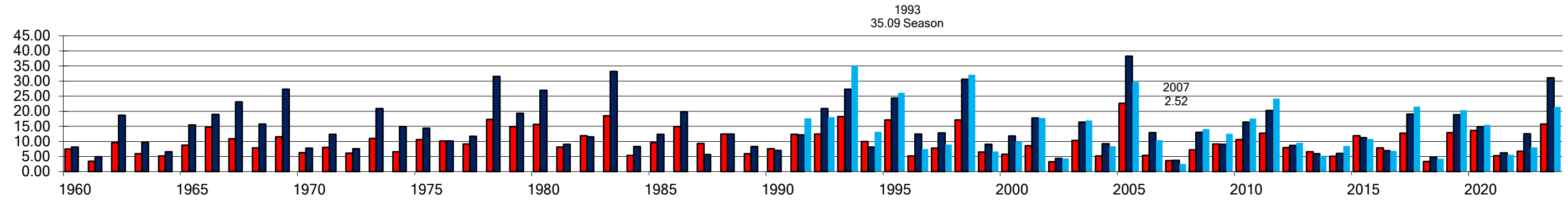
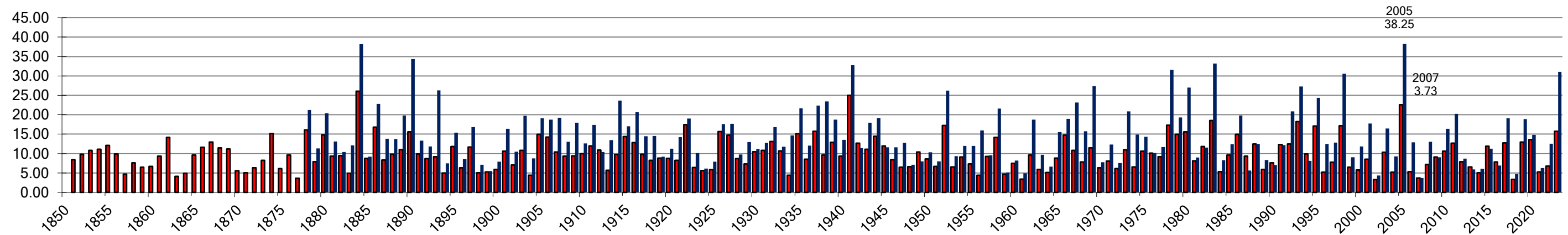


Through the 2023 Water Year

San Diego, Los Angeles, and Horsethief Canyon Precipitation (Water Year - Starting Oct. 1)



San Diego and Los Angeles Precipitation, 1850 to Present (Water Year - Starting Oct. 1)



WATER YEAR	SD	LA	HCR
1850			
1851	8.43		
1852	9.86		
1853	10.84		
1854	11.08		
1855	12.08		
1856	9.92		
1857	4.72		
1858	7.65		
1859	6.49		
1860	6.70		

Water Year Averages	
HCR Average since 1991	14.28
LA Average since 1991	14.45
LA Average since 1878	14.77
SD Average since 1991	9.72
SD Average since 1851	9.88

1861	9.35		
1862	14.16		
1863	4.12		
1864	4.89		
1865	9.63		
1866	11.63		
1867	12.93		
1868	11.49		
1869	11.17		
1870	5.54		
1871	5.06		
1872	6.36		
1873	8.27		
1874	15.18		
1875	6.10		
1876	9.63		
1877	3.63		
1878	16.10	21.26	
1879	7.88	11.35	
1880	14.79	20.34	
1881	9.30	13.13	
1882	9.47	10.40	
1883	4.91	12.11	
1884	26.04	38.18	
1885	8.73	9.21	
1886	16.83	22.76	
1887	8.33	13.82	
1888	9.86	13.76	
1889	11.01	19.78	
1890	15.63	34.32	
1891	9.90	13.33	
1892	8.67	11.80	
1893	9.21	26.27	
1894	5.02	7.47	
1895	11.86	15.37	
1896	6.33	8.54	
1897	11.66	16.83	
1898	5.05	7.15	
1899	5.24	5.51	
1900	5.90	7.90	
1901	10.60	16.41	
1902	7.03	10.48	
1903	10.84	19.75	
1904	4.40	8.74	
1905	14.98	19.07	
1906	14.24	18.75	
1907	10.43	19.20	
1908	9.36	13.02	
1909	9.41	17.92	
1910	10.00	12.64	
1911	11.98	17.36	

1912	10.93	10.37
1913	5.67	13.45
1914	9.73	23.63
1915	14.41	17.04
1916	12.83	20.69
1917	9.85	14.49
1918	8.23	14.53
1919	8.82	9.20
1920	8.73	11.27
1921	8.23	14.25
1922	17.42	19.04
1923	6.39	10.14
1924	5.62	6.12
1925	5.82	7.94
1926	15.70	17.56
1927	14.74	17.70
1928	8.69	9.77
1929	7.33	12.98
1930	10.47	11.21
1931	10.86	12.78
1932	13.10	16.83
1933	10.68	11.75
1934	4.41	14.68
1935	15.09	21.63
1936	8.53	12.02
1937	15.76	22.35
1938	9.59	23.44
1939	12.90	18.74
1940	9.36	13.54
1941	25.03	32.79
1942	12.68	11.37
1943	11.14	17.94
1944	14.43	19.18
1945	11.94	11.62
1946	8.44	11.63
1947	6.51	12.74
1948	6.65	7.12
1949	10.42	8.01
1950	8.63	10.31
1951	6.73	7.97
1952	17.27	26.19
1953	6.54	9.33
1954	9.13	11.99
1955	7.32	11.99
1956	4.41	15.95
1957	9.26	9.54
1958	14.15	21.59
1959	4.70	5.13
1960	7.47	8.17
1961	3.44	4.93
1962	9.59	18.71

1963	5.88	9.71	
1964	5.15	6.60	
1965	8.81	15.50	
1966	14.76	18.93	
1967	10.86	23.13	
1968	7.86	15.71	
1969	11.48	27.35	
1970	6.33	7.74	
1971	8.03	12.32	
1972	6.12	7.54	
1973	10.99	20.89	
1974	6.59	14.92	
1975	10.64	14.35	
1976	10.14	10.12	
1977	9.18	11.67	
1978	17.30	31.57	
1979	14.93	19.29	
1980	15.62	26.97	
1981	8.13	9.00	
1982	11.85	11.53	
1983	18.49	33.19	
1984	5.37	8.28	
1985	9.60	12.38	
1986	14.95	19.82	
1987	9.30	5.61	
1988	12.44	12.47	
1989	5.88	8.34	
1990	7.62	7.02	
1991	12.31	12.19	17.69
1992	12.48	20.86	18.06
1993	18.26	27.28	35.09
1994	9.93	8.11	13.16
1995	17.13	24.37	26.09
1996	5.18	12.44	7.53
1997	7.73	12.85	8.93
1998	17.16	30.57	32.06
1999	6.50	9.08	6.66
2000	5.75	11.79	9.96
2001	8.57	17.72	17.72
2002	3.30	4.37	4.37
2003	10.31	16.42	16.93
2004	5.18	9.25	8.42
2005	22.60	38.25	29.73
2006	5.35	12.90	10.41
2007	3.67	3.73	2.52
2008	7.20	13.01	14.06
2009	9.15	9.08	12.50
2010	10.60	16.36	17.59
2011	12.70	20.20	24.17
2012	7.90	8.70	9.51
2013	6.55	5.93	5.28

Using rainy season
data where I didn't
keep monthly data,
only rainy season data
was available
Shown
In
Blue
missing - use LA
missing - use LA
LA's wettest year on record.
LA's driest year on record

2014	5.09	6.04	8.47
2015	11.91	11.24	10.83
2016	7.86	6.94	6.86
2017	12.73	19.07	21.52
2018	3.32	4.72	4.26
2019	12.93	18.85	20.31
2020	13.60	14.82	15.49
2021	5.24	6.24	5.52
2022	6.75	12.54	8.03
2023	15.76	31.07	21.45

LA's driest 4 years on record

WATER YEAR	SD	LA	HCR
------------	----	----	-----